



**5 Star**

GRESB 5-star rating since 2016



**100%**

LEED Certified\*  
66% Platinum  
33% Gold



**30%**

2023 Portfolio Renewable electricity



**Gold**

2018, 2021 and 2024 Green Lease Leader Landlord Gold



**PORTFOLIO ACCOMPLISHMENTS**

- + 66% of properties are LEED Platinum Certified\*
- + 33% of properties are LEED Gold Certified\*
- + 76% of properties are Fitwel 2 Star Certified\*
- + 2024 - 100% of properties are UL Verified Healthy Buildings Certified for Air & Water Quality\*
- + 100% of properties are ENERGY STAR Benchmarked, with a 2024 average ENERGY STAR score of 82\*
- + **Transportation** – 88% of the portfolio provides EV charging stations for a total of 247 **standard and 8 fast charging** plugs. Secure bicycle lockers at 100% of properties, with mass transit options also convenient to all properties.

*\*Based on directly managed assets*

**Water Goal**

Water Goal Achiever in 2023 by Better Buildings



**76%**

of portfolio is Fitwel 2 Star Certified\*



**42%**

CO2 Emissions Intensity Reduced in 2022 from 2013



**7 Year**

ESPOY Award Recipient since 2018 with Sustained Excellence since 2020

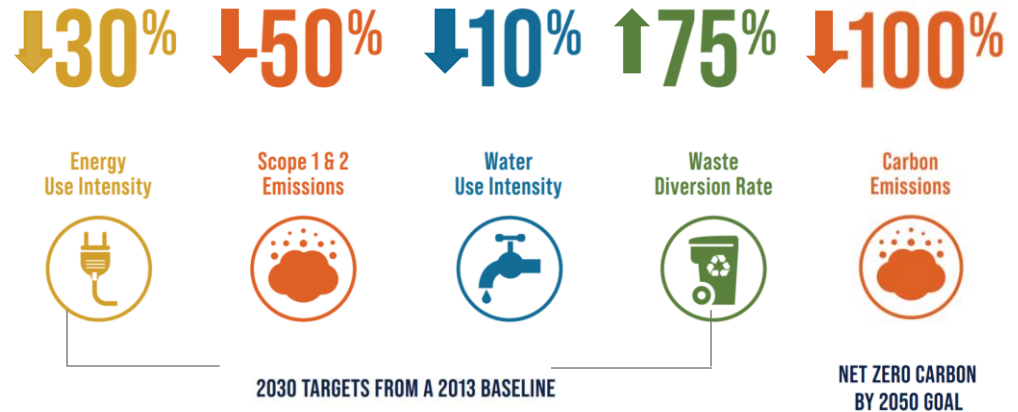




*CommonWealth Partners utilizes proven strategies combined with cutting-edge technologies across our portfolio to minimize our energy, emissions, water and waste footprint and to promote biodiversity*

## PORTFOLIO PROGRESS

- + **Net Zero 2050 Goal** - in alignment with ULI Greenprint
- + **Science Based Targets** – Portfolio goal to reduce Scope 1 & 2 GHG emissions by 50% by 2030 established with Science Based Targets (SBTI) and 100% net zero carbon goal by 2050 established with ULI Greenprint
- + **Urban Beekeeping** - The portfolio has 18 rooftop beehives, plus both native & drought tolerant foliage that contribute to pollination in the local ecosystem, supporting UN Sustainable Development Goal 15. Our beehives can produce 30 pounds of honey per hive, which is shared with and enjoyed by the property’s tenants.
- + **U.N. Sustainable Development Goals** – 17 out of the 17 UN SDG goals are in progress, focused on ESG initiatives
- + **Risk & Resilience** – Emergency Preparedness Guides & Programs in place at all properties. Annual property-level and every 3-year portfolio-level analyses of physical, social and transition risks.
- + **Health** – Blood donation drives administered throughout the year, a variety of health-conscious programs offered including yoga, meditation, healthy cooking, and sound baths
- + **Portfolio Environmental, Social & Governance (ESG) Policies** - 34 ESG policies at the property and corporate level designed to educate our employees, vendors & tenants on best practices



**Tenant ESG Communications:** We strive to keep tenants informed through our Green Office Guide, Bi-Annual ESG Newsletters, Lobby events, Awareness month campaigns, and Earth Day events.

